

M A N U A L



NAX 600B



over **100** years
of **EXPERIENCE**



A



B



C



D



BRUSHCUTTER
Model: NAX 600B

CONSTRUCTION OF BRUSHCUTTER AND ILLUSTRATIVE DRAWINGS

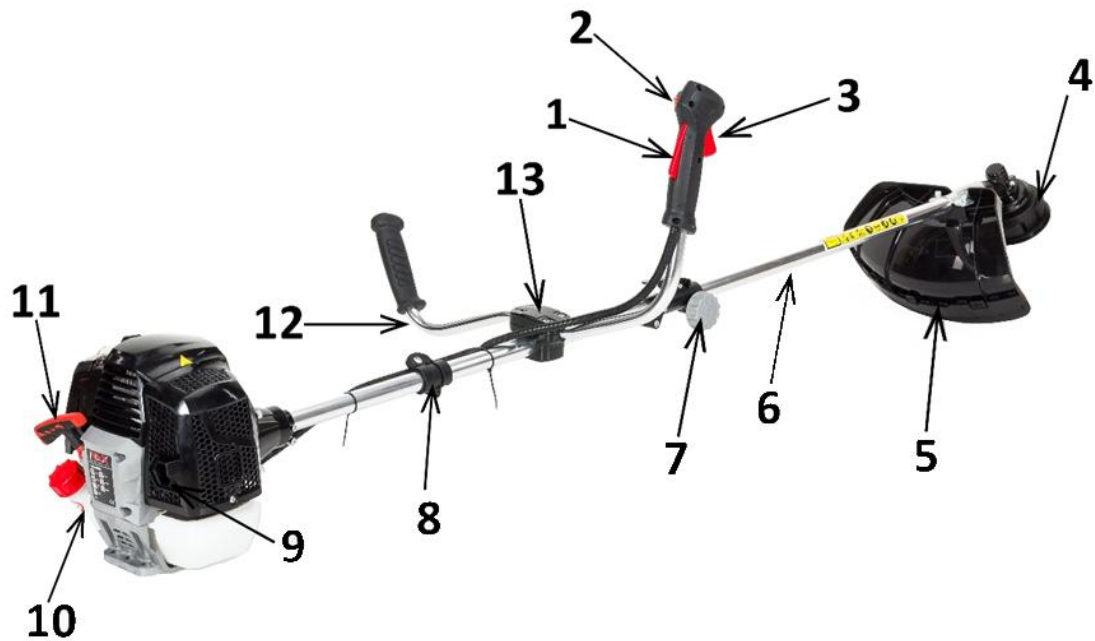


Fig. 1



Fig. 2

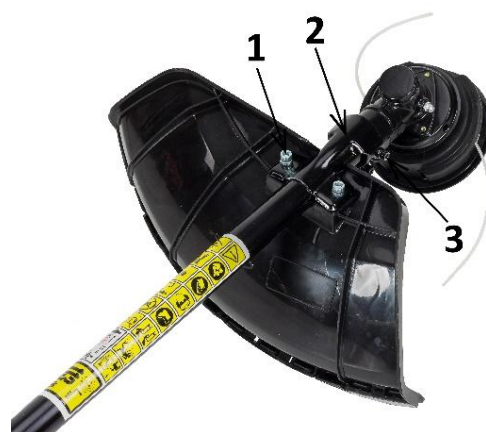


Fig. 3

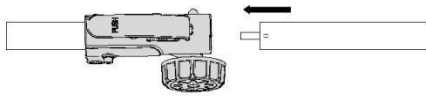


Fig. 4

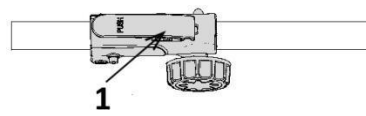


Fig. 5

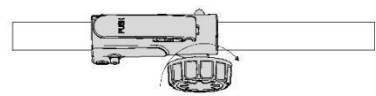


Fig. 6

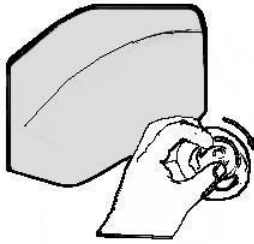


Fig. 7

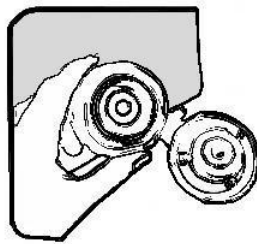


Fig. 8

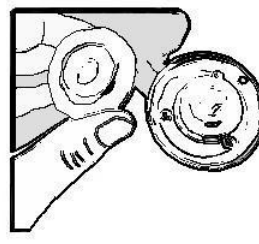


Fig. 9

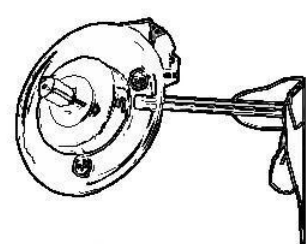


Fig. 10

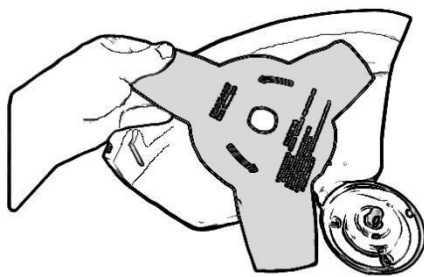


Fig. 11

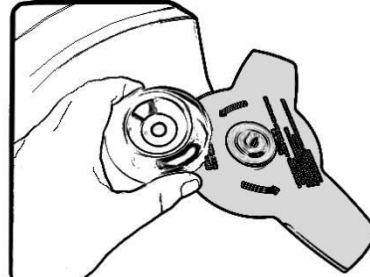


Fig. 12

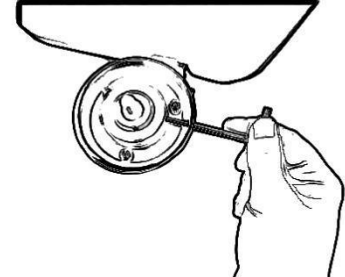


Fig. 13

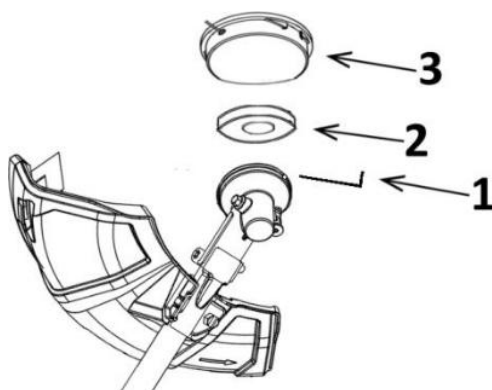


Fig. 14

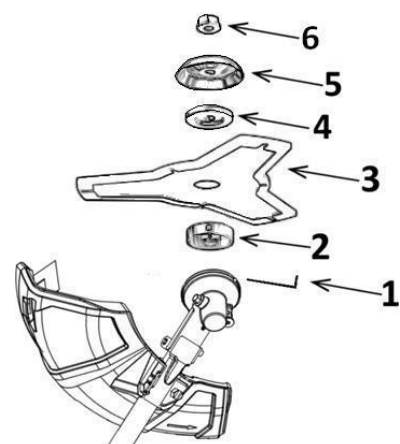


Fig. 15



Fig. 16

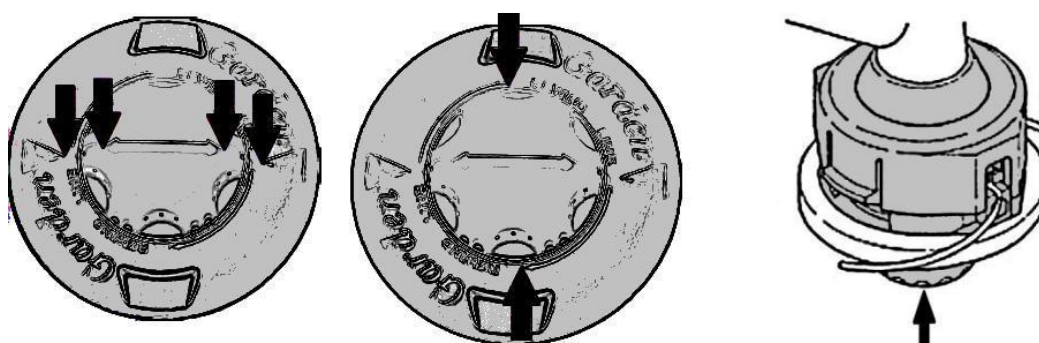


Fig. 17



Fig. 18

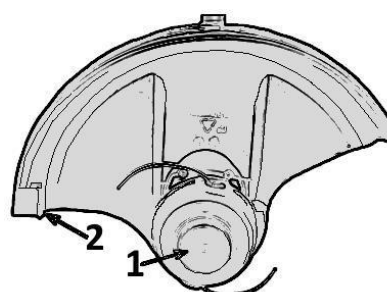


Fig. 19

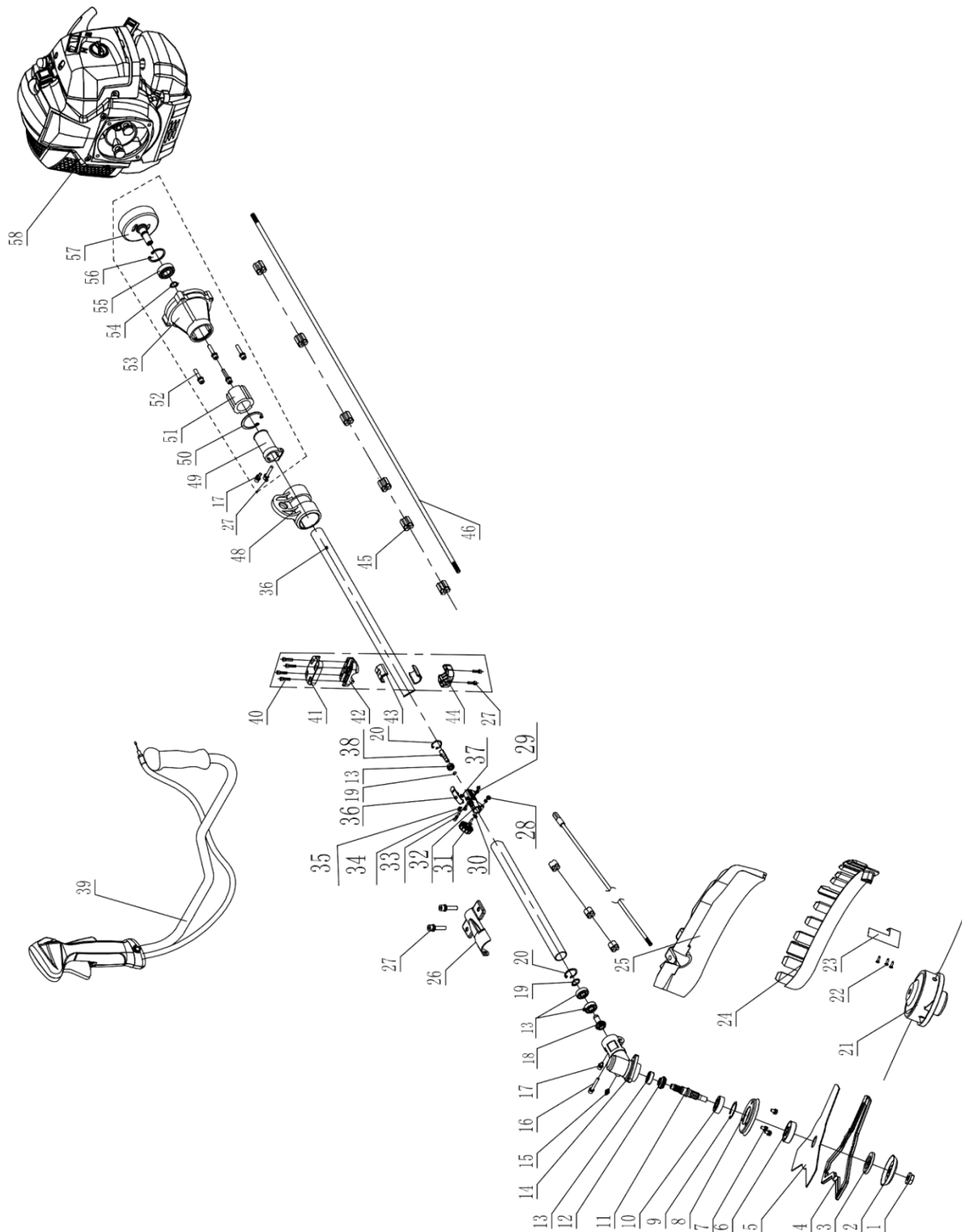


Fig. 20

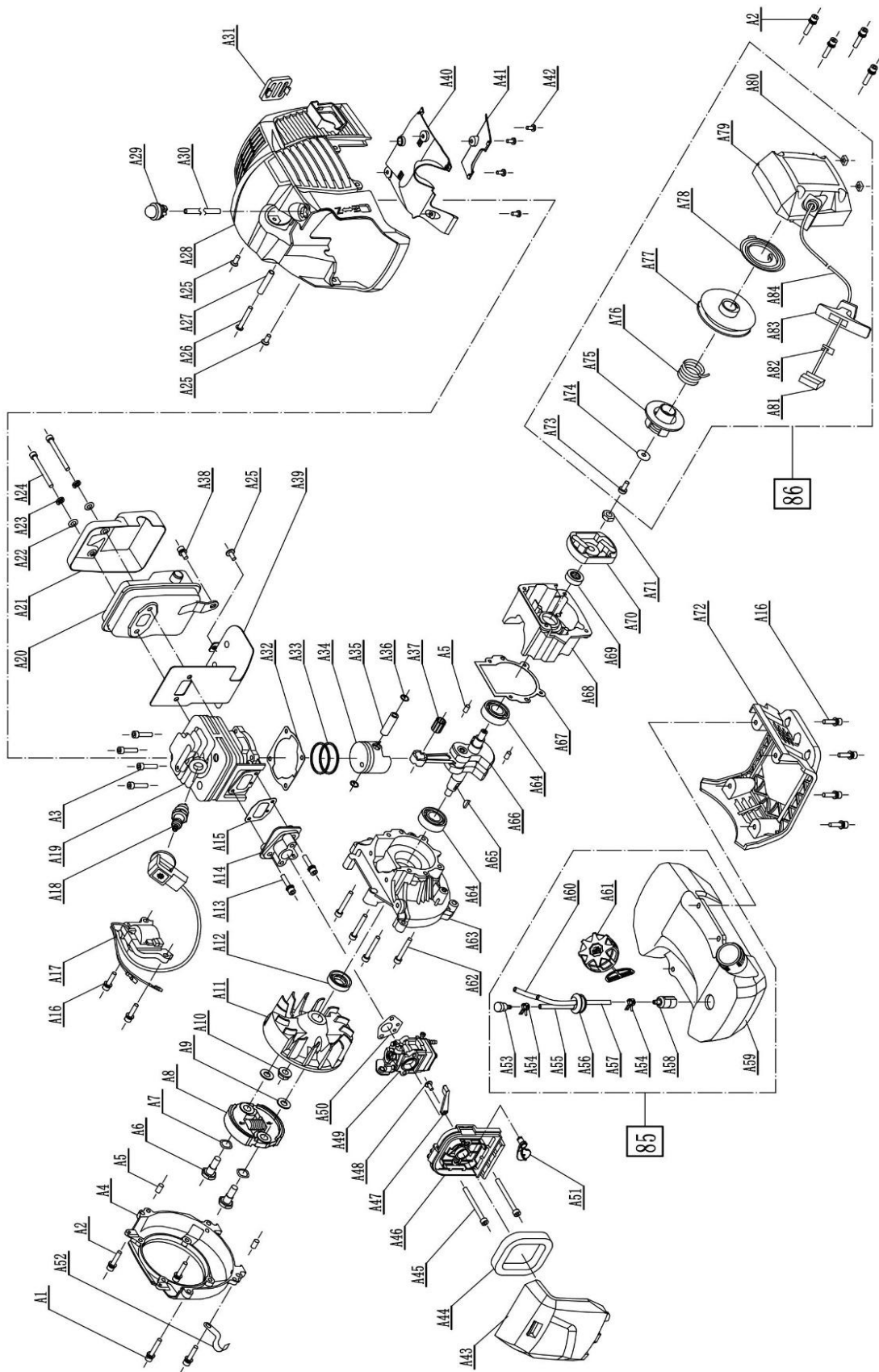


Fig. 21

**WARNING!**

Before assembly or operating, read the Operator's Manual.

The device is intended for household areas.

Using the device for professional, semi-professional or commercial purposes voids the warranty.

Original operation manual, edition 1/2020

Translation of the original operation manual from polish language

This manual should be treated as an integral part of the device. It should be stored in the place provided for it so that it is easily accessible. Remember to pass on the operation manual to a new owner or user if the device is resold or transferred to another person.

TABLE OF CONTENTS

Table of contents	9
Technical data	10
Description of graphic pages and pictograms	10
Safety rules for machines and devices with internal combustion engine	11
General safety regulations	11
Detailed safety regulations	13
Safety and liability of the manufacturer	16
Residual risk	16
Application	16
Additional information for the user	16
Preparing for work	17
Operation	17
The starting	18
Maintenance	20
Transportation	20
Problems review and diagnosis	21
Warranty and service	22
Device assembly diagrams	22
Notes	22
Declaration of Conformity	24
Warranty conditions	26
Warranty card	27

THE DEVICE INCLUDES:

1. Brushcutter,
2. Cutting unit cover,
3. Line head,
4. Three-armed knife,
5. User manual, warranty card, warranty conditions and EC declaration of conformity.

TECHNICAL DATA

Brushcutter	
Type, model	NAX 600B
Engine	TT-1E40F-5 BS series
Fuel mix	40: 1 (4l of gasoline for every 100 ml of two-stroke oil)
Engine capacity	42.7 cc
Machine rated power	1.2 kW - 7500 rpm
Maximum motor torque	1.8 Nm - 5500 rpm
Fuel tank capacity	1 L
Spark plug	TORCH L8RTF
Maximum speed without load	9,000 rpm
Engine idling speed range	3000 ± 300 rpm
Cutting diameter cutting line / disc	42 cm / 25.5 cm
Cutting tool bore diameter	26 mm
Maximum diameter of the line	3.0 mm
Working shaft (pipe)	28 mm (diameter); 2 mm (thickness)
Shield rotation direction	leftward
Guaranteed sound power level LWA	113 dB (A)
Sound pressure level LpA at the workplace; measurement uncertainty	LpA = 99.5 dB (A) K = 3 dB (A)
The value of vibrations transmitted by the machine and acting on the operator's upper limbs; measurement uncertainty K	a front_hv, eg 6.566 m / s ² a rear_hv, eg 9.661 m / s ² K = 1.5 m / s ²
Equipment mass	7.6 kg
Year of manufacture	2020

DESCRIPTION OF GRAPHIC PAGES AND PICTOGRAMS

Pictograms page 2.A

1. Attention! Danger. Exercise special caution.
2. Important! Read the instructions and follow the warnings.
3. Use protective gloves.
4. Wear safety glasses and ear protection.
5. Wear safety shoes.
6. Note: Keep hands and feet away from the knife blades.
7. Danger of injury from objects thrown out by the working machine. Keep away from unauthorized persons.

8. Note: Disconnect the high-voltage pipe from the spark plug before maintenance and / or repair.
9. Risk of fire or explosion. Gasoline is highly flammable.
10. Note: A hot surface can cause burns.
11. Note: Exhaust gases are harmful to health. There is a danger of poisoning or suffocation. Do not use the device indoors.
12. Keep a safe distance from buildings.
13. Keep equipment out of the reach of children.
14. Do not dispose of used equipment. It is the user's responsibility to hand over used equipment to a designated collection point for waste recycling.
15. Keep a safe distance from unauthorized persons.

**Remember!**

- ✓ Risk of fire or explosion. Gasoline is highly flammable.
- ✓ Wear protective footwear
- ✓ Check and clean the area before starting work.
- ✓ Note: Exhaust gases are harmful to health. There is a danger of poisoning or suffocation. Do not use the device indoors.
- ✓ Use extreme caution when working on slopes and sloping ground.
- ✓ Before cleaning, repairing / checking the machine, make sure that the blade and all moving parts have stopped.
- ✓ Keep out of the reach of children.
- ✓ It is prohibited to work in the rain.

OTHER MARKINGS ON THE MACHINE

1. Name plate (page 2.B).
2. Guaranteed sound power level (page 2.C).
3. Other markings (page 2.D).

SAFETY RULES FOR MACHINES AND DEVICES WITH COMBUSTION ENGINE**WARNING!**

- Read this manual thoroughly. Familiarize yourself with the safety regulations and with the control systems and the principles of proper use of the device.
- Failure to observe the following warnings and safety instructions may result in electric shock, fire and / or serious injury.
- Retain this operation manual for reference.
- This equipment is not intended for use by persons (including children) with reduced physical, sensory or mental capacity or without experience or knowledge of the equipment, unless supervised or in accordance with instructions for use given by persons responsible for their safety.
- Do not allow the device to be used by children, adolescents up to 16 years of age and people not acquainted with the device's operation manual.

GENERAL SAFETY REGULATIONS**WORKING AREA SAFETY**

- Ensure good lighting and order in the workplace. Cluttered and dark areas contribute to accidents.
- Keep children and observers away from places where devices with an internal combustion engine are used. Distractions can cause loss of control of the device. Garden equipment should be left away from unauthorized persons.
- The operator or user is responsible for accidents or hazards occurring to other people or the environment.

SAFETY DURING WORKING WITH FUEL

- The internal combustion engine is designed to run on gasoline or a fuel mixture (see type of fuel in the device's technical data).
- Gasoline should be stored only in specially prepared containers (canisters).
- Store gasoline away from factors that could cause a fire, e.g. bonfires, open flames, where there is electric sparking, elevated temperature, welding sparks or other heat sources that can cause fuel to ignite.
- The fuel tank should only be filled outdoors.
- It is extremely dangerous to smoke cigarettes or use open flames when the machine is running or when filling the fuel tank.
- Always turn the engine off and cool before filling the tank with fuel.
- Do not fill the tank above the lower edge of the filler neck, gasoline has a high thermal expansion.
- If you spill fuel, immediately wipe up spilled gasoline with a dry cloth.
- When filling the fuel tank, be careful not to spill fuel on clothing. Gasoline-soaked clothing can catch fire and should be changed immediately.
- After filling the tank with fuel, tighten the cap tightly and before starting the engine, move the fuel canister to a place at least 3 m away from the place where the filling was carried out.
- Before starting the engine, check the tightness of the entire fuel system, especially the fuel tank, fuel lines, connectors, filler cap and carburetor area. Do not start the engine if you detect a leaking fuel system as it may cause a fire.
- The device should not be operated in explosive atmospheres, which form flammable liquids, gases or dust. The internal combustion engine may create sparks which may ignite the dust or fumes.
- Do not use the device if you have trouble turning it off. Any device that cannot be turned off is dangerous and must be repaired.
- Do not store the device with filled fuel tank indoors. Gasoline vapors are flammable and dangerous to health.



CAUTION!

Avoid breathing gasoline vapors and exhaust fumes. Gasoline, gasoline vapors and exhaust fumes can cause poisoning.

Do not operate the saw in closed or poorly ventilated rooms. In case of headache, nausea, hearing or vision impairment, stop work immediately.

PERSONAL SAFETY

- Be foresightful, watch what you do, and use common sense when working with the equipment. Do not use the equipment when you are tired or under the influence of drugs, alcohol or medication. A moment of inattention during work can cause serious personal injury.
- Protective equipment should be used. Always wear safety glasses. Wearing protective equipment such as a dust mask, non-slip shoes, helmet or hearing protectors under the right conditions will reduce personal injury.
- Before starting the equipment, remove all objects and keys. Leaving the key in the rotating working part of the machine can cause personal injury.
- Do not lean too far. You should always stand firm and balance. This will allow better control in unpredictable situations.
- Dress properly. Do not wear loose clothing or jewelry. Keep your hair, clothing and gloves away from moving parts. Loose clothes, jewelry or long hair can be caught in moving parts.
- When working, hold the tool by the additional handles if the tool is equipped with them. Losing control of the tool carries the risk of injury.
- Do not use the device if you have trouble turning it off. Any device that cannot be turned off is dangerous and must be repaired.



CAUTION! Despite the use of a safe structure by design, the use of protective measures and additional protective measures, there is always a residual risk of injury during work.

USE AND CARE FOR EQUIPMENT

- Do not overload the tool. Use a tool with the power appropriate for the work. Properly selected equipment will enable better and safer work under the load for which it was designed.
- Store the unused equipment out of the reach of children. Do not allow people not familiar with the tool or this manual to use the equipment. Internal combustion tools and equipment are dangerous in the hands of untrained users.
- Internal combustion tools must be maintained. Check alignment or jamming of moving parts, cracked parts and all other factors that may affect the operation of the device. If damage is found, the equipment must be repaired before use. Many accidents are caused by improper repair and / or maintenance of the equipment.
- Before using the device, replace all defective, worn and damaged parts. Replace with new warning signs on the device if they become illegible or damaged.
- Warning decals and spare parts can be ordered from NAX service and authorized dealers.
- An internal combustion tool, equipment, working tools etc. should be used in accordance with these instructions, taking into account the conditions and the type of work to be performed. Using the device in a manner not intended for it may be dangerous.

OPERATION AND EXPLOITATION OF TOOLS EQUIPPED WITH A BATTERY

- Before inserting batteries into the tool, make sure that its on / off switch is in the "off" position. Inserting the batteries into the device when the on / off switch is in the "on" position can cause serious injury.
- Use only the charger recommended by the manufacturer. Using a charger to charge other types of batteries may cause a fire.
- Never use batteries other than those recommended by the manufacturer. Use of other batteries may result in serious injury or fire.
- When the device is not in use, remove the battery. The battery should be kept away from metal objects such as paper clips, coins, nails, screws, etc., which may short-circuit the battery terminals. Shorting the battery terminals together may cause burns or a fire.
- Under extreme conditions, liquid may escape from the battery. You must avoid contact with it. If it accidentally it comes into contact with liquid - rinse immediately with water. If liquid gets in your eyes, contact your doctor immediately. Liquids leaking from the battery may cause irritation or burns.
- It is forbidden to use chargers and power supplies outside the rooms and in rooms with high humidity such as bathrooms or basements.



CAUTION! Chargers and power supplies for battery devices are intended for indoor use in a dry environment. Danger of electric shock and / or damage to the device.

REPAIR

- Before carrying out any adjustment, part replacement or storage, the spark plug wire must be removed. Such preventive safety measures reduce the risk of accidental starting.
- Repair should be performed by a qualified person using only original spare parts. This will ensure further safe operation of the device. It is recommended to have any service performed by an authorized NAX service center.

CAUTION! Danger of suffocation when children play with the packaging. The packaging, especially the foil bag, should be stored out of the reach of children.

DETAILED SAFETY REGULATIONS FOR BRUSHCUTTERS

- Observe all safety instructions, operation manual, descriptions and data supplied with the device. Failure to follow the instructions below may pose a risk of serious injury.
- Watch out for sharp knife edges and cutting line. The head of the brushcutter rotates even after starting the engine
- You can only use the brushcutter in good technical condition, perform the necessary actions if necessary or contact the service center. It is recommended to use the services of an authorized NAX service.
- Before starting, check if:
 - ✓ the device is assembled according to the operation manual,

- ✓ the cutting tool and the whole cutting unit (three-armed knife or head with a cutting line, fastening elements, construction of the cutting unit) are in good technical condition; regularly check their attachment, damage and wear (depressions, cracks),
- ✓ safety devices (e.g. cover, housing, handle, levers) are in good technical condition and work properly.
- The brushcutter must not be turned on if the cutting tool is not mounted correctly. Danger of dangerous vibrations!
- Cutting tools should be sharp and clean. Properly keeping sharp edges of cutting tools reduces the likelihood of jamming and simplifies handling.
- Before adjustment, cleaning, maintenance, switch off the device and remove the high voltage cable from the spark plug.
- Do not mow when other people, especially children or pets, are nearby.
- Do not start a damaged brushcutter.
- Do not touch the cutting elements until the equipment is switched off and the motor of the device and cutting elements do not stop completely.
- Do not lift or carry the device with the engine running.
- Turn off the brushcutter and remove the high voltage cable from the spark plug when:
 - ✓ you leave the equipment unattended,
 - ✓ before adjusting the lock,
 - ✓ before checking, cleaning or repairing the device,
 - ✓ after hitting with a foreign object,
 - ✓ in the event of abnormal vibrations.
- National regulations may restrict the use of the machine.

PREPARATION

- When mowing, always wear solid footwear and long pants, do not operate the device without shoes or wearing sandals.
- Check carefully the area where you will be working and remove all stones, branches, wires and other foreign objects protruding from the ground.
- In high grass, you may not notice obstacles (e.g. stumps, roots), so before starting work with the device, mark all obstacles hidden in the grass that cannot be removed.
- Always check the cutting elements for wear and damage before use. Replace worn or damaged knives, check the cutting line and head for damage.
- Check the centrifugal clutch before starting work. To do this, start the brushcutter, press the throttle lever until the brushcutter engine reaches maximum speed, then release the throttle lever until the engine speed falls to idle. The cutting tool should stop after a while. If the cutting tool does not stop, the cash register must be returned for repair.
- Before use and after falling or other impacts, inspect the scythe to identify any significant damage that may affect safety.



REMEMBER!

Do not leave the brushcutter uncontrolled. Never leave running equipment unattended, as unintended use may occur, which may cause accidents.

USAGE

- Mow only in daylight or in good artificial light.
- Do not mow during rain, especially during a storm. Avoid mowing wet grass.
- Always make sure that your legs stand firmly on the slope.
- Come on, never run. Remember to keep a secure position.
- Do not mow on excessively sloping slopes.
- Do not use the device with damaged covers or housings or without a safety device, e.g. attached covers.
- Start the engine according to the instructions, making sure that the feet are away from the cutting tools.
- Do not keep your hands and feet near rotating parts.



ATTENTION! The device causes vibrations of the limbs during operation. The value of vibration acceleration is provided in the table with rated data. Prolonged exposure of hands to vibration for several months or years, can cause the white toe disease, i.e. a decrease in limb temperature caused by ischemia. Symptoms such as tingling, numbness, hypersensitivity to cold should not be underestimated, see a doctor.

- Correct posture during work is important, so as not to over-bother, frequent change of work position is recommended.
- Stop work every 15 minutes - rest is necessary. Tiredness and distraction can contribute to an accident.
- Keep your feet steady and keep balance during work.
- Always use the supplied suspenders.
- List of recommended cutting attachments:
 - ✓ head with a cutting line,
 - ✓ Three-armed knife,
 - ✓ fork disc for brushcutters,
 - ✓ eight-pointed shield,
 - ✓ four-armed shield.
- Attention! All cutting discs used must be designed to work with brushcutters.



CAUTION! Using cutting attachments not intended for use with brushcutters, e.g. metal rotating ones chains or flail knives consisting of several parts, is very dangerous and can cause serious accidents.



CAUTION! The scythe is equipped with cutting unit covers ensuring users safety. Never work with the covers or safety components removed or broken. Working without working covers can lead to an accident and, consequently, to loss of health and even life. Do not use covers other than those supplied by the manufacturer, as this may affect the safety of the user and bystanders.

TRANSPORTATION

- Before transporting the brushcutter, cool the engine, drain fuel and oil.
- If the brushcutter is to be transported with a metal cutting attachment (e.g. a three-armed knife), the attachment must be secured with a protective blade before transport.
- During transport, the device should be secured with transport belts, it is dangerous to leave the device loose.
- All operations related to the replacement of metal cutting attachments must be carried out in protective gloves.

MAINTENANCE AND STORAGE

- Before attempting any repair or maintenance, make sure the brushcutter engine has stopped and is cold. Disconnect the high voltage cable from the spark plug to prevent accidental starting of the engine.
- Remember that there may be fuel in the machine's tank. Safety rules for handling fuel are described in this manual in the section "Safety in handling fuel".
- Keep all nuts, bolts and screws in good condition to make sure that the device will work safely.



NOTE: The cutting tools are very sharp, be careful not to get injured.

- After finishing work, clean the device of grass, dust and dirt
- Using a brush or scraper, clean the cover and cutting unit from grass and dust, remove the cutting unit if necessary.



CAUTION! Using water under high pressure can damage the outer shell of the housing, destroy safety stickers and markings.

- It is mandatory to protect metal parts with anti-corrosive agents.
- Levers and lines should be oiled at least twice a season, and always before and after the season.
- The entire brushcutter from the outside can be cleaned with a damp cloth and protected with preservatives.
- The brushcutter must be stored in a well-ventilated room in a dry, dust-free place.
- Only a functional brushcutter should be stored; rectify faults before folding.

IN CASE OF AN ACCIDENT OR FAILURE

In the event of an accident, stop / turn off the machine immediately and call for help (if required).

In the event of a fault, stop / turn off the machine and contact an authorized service center to rectify the fault.

SAFETY AND PRODUCER'S LIABILITY

Any use of the brushcutter, other than described in this manual is considered improper and the manufacturer is not liable for any damage or damages resulting from such a procedure.

Proper use also includes respecting the operating, maintenance, storage and repair conditions established by the manufacturer.

To prevent accidents, all safety precautions and hazard avoidance must be followed. Any changes in the construction of the device made by the user may affect the safety of use of the machine and release the manufacturer from liability for damage or injuries.

RESIDUAL RISK

Despite the fact that the machine manufacturer bears responsibility for its construction eliminating danger, certain elements of risk during operation are unavoidable. The residual risk arises from the erroneous behavior of the machine's operator. The greatest danger occurs when performing the following prohibited activities:

- use of the device by children,
- use of the machine for other purposes than described in the Operation Manual,
- when other people, especially children or animals are nearby,
- use of the device by people not acquainted with the operation's manual,
- using the device without proper, protecting operating clothing and footwear protecting foot,
- using the device with damaged guards or the casing and without properly installed safety devices, e.g. shield guards etc.

When observing the instructions in the operating manual, the residual hazards of using the machine may be eliminated. There is a risk in case of failure to comply with the above recommendations.

USAGE

The brushcutter is used to mow the grass while taking care of home lawns. Using the included three-tooth knife, the brushcutter can be used to cut thickets. The device is intended only for mowing lawns in accordance with the description and safety rules contained in these instructions for use. Other applications may be dangerous to users and may cause damage to the equipment.

The machine should not be used to:

- leveling molehills,
- cutting bushes,
- chopping branches.

ADDITIONAL INFORMATION FOR THE USER

Performing maintenance and adjustment work before or after the season can be a problem even for advanced users. The NAX company would like to offer you a service consisting in preparing the machine for storage and / or work. The scope of this service may include: replacement of the candle, cleaning of the working part, disassembly and inspection of the drive belt, maintenance, oil change, replacement / cleaning of the air filter, lubrication of moving parts, sharpening and balancing of the knife and other works depending on the condition of the device. This will ensure long-term and reliable operation and safety of the device.

PREPARING FOR WORK

The brushcutter is delivered by the manufacturer in a cardboard packaging partially disassembled. After reading the operating instructions and assembly drawings, assembling the brushcutter should not be too difficult. All necessary components for assembly are included in the packaging.

OPERATION

CONSTRUCTION OF BRUSHCUTTER

Illustrative drawings can be found on page 4, **Fig. 1, 2**

1. Gas lever lock
2. Switch
3. Gas lever
4. Cutting line head / cutting blade
5. Cutting head cover / cutting blade cover
6. Propeller shaft pipe
7. Pipe and drive shaft connector
8. Suspenders holder
9. Muffler
10. Fuel tank
11. Starter / starter
12. Steering wheel
13. Handlebar mounting bracket
14. Air filter cover butterfly
15. Choke control
16. Candle pipe
17. Primer / fuel pump

MOUNTING THE HANDLE (OF THE STEERING WHEEL)

Unscrew the handle mounting screws **13 (Fig. 1)**.

Place the handle **12 (Fig. 1)** in the collet, which is already attached to the shaft pipe. Lay the collet cover on it and screw both parts of the cover together with the steering tube.

ASSEMBLY OF THE CUTTING ATTACHMENT COVER (ASSEMBLY OF THE SAFETY COVER)

Unscrew the band fastening the safety cover **2 (Fig. 3)**. Attach the cover as in **Fig. 3**, put on the retaining band, which should be tightened with the hexagon bolts **1.3 (Fig. 3)**

Attention! Using the brushcutter without an effective safety guard endangers the safety of the brushcutter operator and bystanders.

CONNECTING DRIVE SHAFT

Connect the two pipes in which the drive shaft is located (**Fig. 4**) until the locking pin engages **1 (Fig. 5)**. Tighten the butterfly visible on **Fig. 6**.

ASSEMBLY OF THE CUTTING ATTACHMENT

ASSEMBLY OF SPOOL WITH A LINE

Unscrew the cap (**Fig. 7**) the nut is unscrewed clockwise.

Remove the washer from the pressed sheet metal (**Fig. 8**) remove the spacer (**Fig. 9**)

Now we proceed to assembly the head with a cutting line

Lock the cutting attachment drive axis with a hex wrench (**Fig. 10**)

Screw the cutting head with the cutting line by turning it counterclockwise (**Fig. 14**) remembering to block the drive shaft with the hex key **1 (Fig. 14)**.

ASSEMBLY OF THE THREE-ARM KNIFE

Unscrew the cap (Fig. 7) the nut is unscrewed clockwise.

Remove the washer from the pressed sheet metal (Fig. 8) remove the spacer (Fig. 9).

We proceed to mount the three-armed knife.

Mount the three-armed knife on the shaft of the drive shaft (Fig. 11). Attach the washer from the pressed sheet metal (Fig. 12).

Lock the cutting attachment drive axis with a hex wrench (Fig. 13).

Screw the cap 6 (Fig. 15) using the key provided in the set by turning counterclockwise. The order of all actions can be seen on Fig. 15 (1 hex key, 2 washer, 3 three-armed knife, 4 spacer, 5 pressed washer, 6 nut).

SUSPENDERS

The suspenders' belt is put on the left shoulder and the hip cover will be on the operator's right, where the brushcutter's suspension point is located. This cover protects the operator against vibrations of the working brushcutter, and also protects the working clothes from contact with the brushcutter. An overview drawing of the suspenders Fig. 16.

REPLACING THE CUTTING LINE

Before replacing the line, check that the head is in good working order, is not worn, has no mechanical damage, and is complete. If the head has any mechanical damage and excessive traces of use, the entire head must be replaced.

Stop the brushcutter's engine with the ignition switch 2 (Fig. 1).

Wait for all moving parts of the brushcutter to stop.

Empty the fuel tank.

Place the brushcutter on a firm, even surface with the head up.

Prepare a section of cutting line with a maximum diameter of 3 mm and a length of 4 meters.

Set the position of the arrow visible on the winding knob so that it coincides with the arrow on the head housing (Fig. 17).

Enter the measured section of the line through the hole in the aluminum grommet, then gently maneuver insert the line so that it comes out through the grommet on the opposite side of the head. Align the length of both ends of the line drawn through the head.

Start winding the line by turning the winding knob clockwise (arrows on the head housing with the mark **REWIND LINE** - Fig. 17).

Finish winding the line with the knob when about 15 cm of line protrudes on both sides of the head.



Attention! In the event that the line retracts inside the head, press both side latches at the same time as the head narrows (Fig. 17).

Remove the top head cover, then slide both ends of the line into the grommets to guide the line out of the head. Pay special attention to the proper seating of the vias in the head base. Incorrect assembly of the grommets in the base of the head will cause them to fall out and, as a consequence, incorrect operation of the cutting line and excessive vibration transmitted by the head.

Mount the bottom head cover by pushing the catches firmly into the mounting holes until you hear a characteristic "click".

Extend both ends of the cutting line about 15 cm. To do this, press the winding wheel and pull vigorously on both ends of the line.

THE STARTING

Use Eurosuper 95 unleaded petrol and synthetic or semi-synthetic oil for high-speed two-stroke engines.

40: 1 mixture composition (4L fuel per 100 ml oil)

Table for the preparation of a 40: 1 fuel-oil mixture

The amount of gasoline in liters	1	2	3	4	5
The amount of oil in ml	25	50	75	100	125



Important! The use of synthetic oil for two-stroke engines will reduce the formation of spark plug, muffler and cylinder pistons, as well as reduce exhaust emissions. It will also provide proper lubrication, which extends engine life. The use of mineral oil (Mixel type) and its varieties as well as oils intended for four-stroke engines are strictly prohibited. It is important to use only clean, fresh gasoline of good quality. The fuel mixture should be used within three weeks of its preparation. First, prepare the fuel mixture and then fill the fuel tank. Do not mix in the fuel tank. To properly prepare the fuel



mixture, first pour gasoline into a special container (canister), then oil and mix. It is recommended to use the special container included in the set, in which the amount of gasoline and the amount of oil to be added are marked. The whole should be mixed thoroughly.



Attention!

Dealing with fuel should be carried out outdoors, in an open area away from sources of ignition, sparks and flames. When refueling, the engine should be immobilized, no smoking, no cellular phone allowed. The engine must not be hot during refueling.

Focus on what you are doing. The fuel canister or fuel tank of the brushcutter should be shaken before each use (possibility of delamination of the mixture).

To fill the combustion tank. Unscrew the fuel filler cap and pour the mixture using a funnel, being careful not to spill fuel.

If fuel has spilled, wipe it off with a dry cloth.




Important!

Too low a fuel level in the tank (below 1/3 volume) may cause unstable engine operation. During operation, check the fuel level in the tank.

FIRST START OF THE ENGINE

To activate the device:

- Always hold the device.
- Turn the switch on the right handlebar to the "I" position (on) **2 (Fig. 1)**.
- Several times (4-8 times) press the manual fuel pump **17 (Fig. 2)** to bring fuel to the carburetor (it should be pumped until fuel appears in the pump).
- With one hand, holding the brushcutter so that it is stationary, pull the starter handle once without jerking **11 (Fig. 2)** checking that the engine is warm and starting.
- If the engine did not start, move the choke lever **15 (Fig. 2)** into the suction position . Then pull the starter rope until the first cycle of work.
- Press the gas lever lock **1 (Fig. 1)** then the gas lever **3 (Fig. 1)** to turn off choke (choke is automatic)
- Then pull the starter rope to start the device.

If the engine does not start after a few attempts, check the troubleshooting table.

MOWING THE GRASS

Read the safety instructions in this manual before mowing. If you have no experience, check the balance and behavior of the brushcutter without starting the engine.



CAUTION! The first 10 hours of mowing the grass are recommended when using a trimmer head.

You can turn the device off at any time by switching the power button **2 (Fig. 1)** to position "0".



Attention! Periodically remove grass fibers wrapped around the cutting tool axis to prevent the drive axle from overheating. Deposits of grass fibers and weeds are tangled around the drive axle under safety cover. This prevents proper cooling of the propeller shaft and gearbox. Remove grass deposits with a screwdriver or similar tool only when the machine is turned off.

EJECTING THE CUTTING LINE

If the line is too short, pull it out.

The brushcutter is equipped with a bumper head (**Fig. 19**). To eject the cutting line automatically - lightly tap the head on the ground to eject the cutting line. During this operation, remember that too hard or too violent impact of the head against the ground can damage it, so a better way is to manually eject the cutting line.

To eject the line manually:

- press the button in the drum with the fishing line **1 (Fig. 19)**,
- pull out the fishing line to the desired length,
- if the line turns out to be too long, a cutting knife installed in the cover **2 (Fig. 19)** cuts the line to the right length.

MAINTENANCE

The rules for safe maintenance of the device are described in this manual in the section "Maintenance and storage" in the chapter "Detailed safety rules for brushcutters".



WARNING!

Before cleaning, inspecting or repairing the device, make sure that the engine is switched off and is not hot. Disconnect the spark plug to prevent the brushcutter from being switched on accidentally.

AIR FILTER CLEANING

A dirty air filter increases fuel consumption and reduces the efficiency of an internal combustion engine. The air filter should be cleaned as needed, at least every 5 hours of operation of the brushcutter. Sawdust on the filter surface can be removed with a brush. To clean the filter from the inside, use compressed air.

To get to the air filter, unscrew the mounting butterfly **14 (Fig. 2)** and remove the air filter cover.

Cleaning with a damp cloth is allowed, however, provided that the device is dried immediately after this operation. Metal parts must be protected with oil.

Regularly clean the ventilation holes with compressed dry air. Do not insert sharp objects into the ventilation openings.

After finishing work, please:

- Wipe the ventilation holes and leave them free of dirt.
- Wipe the brushcutter with a dry cloth.



Attention! Never use aggressive or corrosive cleaning detergents as they may damage the plastic parts of the device.

Cleaning agents and solvents such as gasoline, carbon tetrachloride, chlorinated cleaning solvents, ammonia and household detergents that contain ammonia can damage plastic components.

Attention! The brushcutter must be stored in a well-ventilated room in a dry, dust-free place.

Only a functional device should be stored; rectify faults before storage.

- Put the cover on the cutting unit before storing the brushcutter.
- Keep the tool out of the reach of children.

CYLINDER RIBBING

Dust accumulating on the cylinder fins may cause the brushcutter engine to overheat, therefore the cylinder fins should be inspected and cleaned periodically during air filter maintenance.

MAINTENANCE OF THE SPARK PLUG

To ensure proper operation of the engine, check the condition of the spark plug, check its cleanliness and the gap, which should be 0.5-0.7 mm. Always do the following with the engine off:

- Carefully pull off the high voltage cable from the spark plug **16 (Fig. 2)**. Do not pull the cable, just directly the candle pipe.
- Unscrew the spark plug using the spark plug wrench provided.
- Visually inspect the spark plug for damage and dirt. Use a copper wire brush to remove carbon and soot deposits.
- Check the gap with a feeler gauge and adjust the electrode distance to 0.5 to 0.7 mm **(Fig. 18)**.
- Check the spark plug washer, screw the spark plug with a spark plug wrench. Torque 12-15 Nm.
- Install the power cord on the spark plug.

TRANSPORTATION

PREPARATION FOR TRANSPORT

- Turn off the brushcutter before moving it.
- To transport the brushcutter, remove the high voltage cable from the spark plug.

- Before transporting the brushcutter, if the cutting attachment is a three-armed knife, replace the cover.
- Carry the brushcutter by holding it firmly and remembering its dimensions.
- When transporting the brushcutter, secure it so that the propeller shaft tube does not deform.
- For transport, the brushcutter must be secured with transport belts, and if possible, transport the scythe folded in its original packaging.

PROBLEMS REVIEW AND DIAGNOSIS

Problem	Possible cause	Solution
Difficulties in starting a cold engine.	No fuel mix.	Check the fuel level and add fuel if necessary.
	Spark plug flooded or damaged.	Check, clean or replace the spark plug.
	No spark on the spark plug.	Replace the spark plug with a new one.
	No suction attached.	See chapter - Starting the engine.
	Contaminated air filter.	Clean or replace the filter.
The equipment goes out and it is difficult to restart.	The fuel mix has run out.	Fill the fuel tank.
	Carburettor clogged.	Clean or replace the carburettor.
	Ignition switch off.	Turn on the switch.
	Too much carbon deposits have accumulated on the spark plug.	Clean carbon deposit collected on the spark plug.
	Choke enabled.	Turn off choke.
Low engine acceleration speed and poor cutting power.	Carburettor incorrectly adjusted.	Have it adjusted at the garden tools service. An authorized NAX service is recommended.
	Air filter clogged.	Clean or replace.
	Dirty fuel filter.	Replace it.
Uneven engine idling.	Carburettor incorrectly adjusted.	Have the garden tools service repaired. An authorized NAX service is recommended.
	Water or dirt in the fuel system.	Change the fuel, and if it does not help - have it repaired by qualified service.

Attention! If the device requires further maintenance, please contact the NAX Central Service.



WARRANTY AND SERVICE

The product purchased by you is intended for amateur (hobby) use only. If the equipment is used for other purposes (commercial, professional), it will lose the guarantor's liability for the purchased equipment. You can find information on the warranty and the NAX service network in the attached warranty card.

Remember that the machine should be cleaned after each use. Keeping the equipment clean will ensure long-term and reliable operation. Cleaning, maintenance and periodic inspections are not repairs. Authorized NAC services may perform these activities as part of a paid service.

DEVICE ASSEMBLY DIAGRAMS

Assembly diagrams of the device are on pages 7 and 8 (Fig. 20 and 21).

NOTES

M A N U A L



DECLARATION OF CONFORMITY

Manufacturer:

name: **NAX POWER Sp. z o.o.**
address: Al. Krakowska 39, 05-090 Raszyn, Poland

with full responsibility declares that the machine:

name: **Brushcutter**
model: **NAX 600B**
serial number: 047 **20** 2490749863 5000 **000001** - 047 **23** 2490749863 5000 **999999**

meets the essential requirements:

- ❖ of Machinery Directive **MD 2006/42/EC**,
- ❖ Compatibility Directive **EMC 2014/30/UE**,
- ❖ Noise Directive **NEE 2000/14/EC Annex VI** and **2005/88/EC**,

meets the requirements of the following harmonized standards:

- ✓ **EN ISO 11681-1:2011**,
- ✓ **EN ISO 14982:2009**,

and meets the requirements:

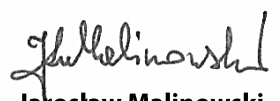
- ✓ 2016/1628/EU, 2018/989/EU.

2000/14/EC: the conformity assessment procedure followed according to Annex V:

- ❖ measured maximum sound power level L_{WA} is 108 dB(A),
- ❖ guaranteed sound power level L_{WA} is 113 dB(A).

Place of submission and storage of Technical Documentation:

NAX POWER Sp. z o.o.
Al. Krakowska 39,
05-090 Raszyn



Jarosław Malinowski

Technical and Certification Direktor

Raszyn, December 20, 2019

WARRANTY

Dear Sir or Madam!

Thank you for purchasing our product and congratulations on your right choice. The device that you bought was designed and manufactured according to the latest technologies and represents global standards of quality and reliability, while being environmentally friendly. We remind you to carefully read the commissioning and operation procedures before using the device; these procedures are contained in the Operating Instructions supplied with the device.

Our specialized service network serves you with all assistance in the field of technical and operational advice.

A list of authorized service points and service tips can be found at: naxpower.com

WARRANTY CONDITIONS

1. NAX guarantees smooth operation of the device in accordance with the technical and operational conditions described in the User Manual.
2. The device is granted a 36-month warranty to the consumer (i.e. a natural person making a legal transaction with the entrepreneur not directly related to its business or professional activity) and a 12-month warranty when purchased by the entrepreneur (i.e. a natural person, a legal person and an organizational unit operating in own business or professional activity). After this period, the user is entitled to paid repairs. The condition for granting a 36-month warranty is a warranty review at an authorized NAX service between 12 and 24 months of use. The review is free, but the costs of providing equipment for the service and consumables such as oil, candle, air filters, fuel filters, are covered by the user / owner of the equipment.
3. All damages disclosed during the warranty period resulting from material, assembly or manufacturing defects will be removed free of charge.
4. The basis for obtaining warranty protection is proof of purchase of the device from an Authorized Distributor of NAX equipment together with the print of this warranty card signed on the day of sale issued by the official **NAX Authorized Distributor**. Warranty coverage will not be granted if the warranty print is certified / stamped by a company that is not an NAX Authorized Distributor. This warranty applies within the territory of the Republic of Poland.
5. Defects of the device subject to warranty will be removed within 14 business days from the date of acceptance at the NAX Authorized Service. This period may be extended to 30 business days in exceptional cases.
6. For reasons beyond the control of the Guarantor, the aforementioned deadline may be extended, in particular if the product requires additional verification / expertise or there are circumstances in the form of force majeure preventing its behavior, e.g. flood, fire, strikes, natural disasters, import restrictions, etc.
7. The warranty does not include activities such as: assembly, maintenance, service, periodic adjustment and cleaning, as well as inspections, oil and filter changes together with materials and parts used for the above activities. These activities can be carried out for a fee.
8. In order to remove defects or damage, the device together with the proof of purchase and a valid warranty card should be delivered to: the nearest Authorized Service Center or use a convenient "door to door" system or to the place of purchase. The device should be cleaned beforehand. The service / shop may refuse to repair an uncleaned device. If the device is to be sent, the operating fluids (fuel and oil) must be emptied before handing it over to the courier or seller. The packaging must ensure safe transport, original packaging is recommended.
9. The method of repair is determined by the guarantor. The guarantor is not obliged to provide a replacement device during the warranty repair.
10. This warranty applies provided that the device is properly used, maintained and serviced in accordance with the attached operating instructions.
11. The user is obliged to immediately cease using the damaged device. Continued use of a damaged device may result in further faults and endanger the health or life of the user or third parties.
12. The warranty does not cover damage resulting from: mechanical damage, misuse, modification or repair carried out by unauthorized persons. This also applies to the installation and use of incorrect parts and filters, greases, oils, fuels.
13. Damage to the warranty seals, if any, or the serial number plate can be the basis for rejecting the warranty.
14. The warranty does not cover defects caused by lightning, fire, floods and other natural disasters.
15. The warranty does not cover consumables and components subject to natural wear during operation and subject to user control such as V-belts, bulbs, filters, spark plugs, road wheels, knives and cutting blades, knife holders, string heads, cutting chains, chain guides, steering cables, keys and overload pins.
16. NAX is not responsible for direct or indirect damages, losses or costs resulting from the use or inability to use the device for any purpose.
17. If it is necessary to carry out activities related to the maintenance of the device before starting the repair, the Service / Store may carry out such activities against payment with the consent of the user / advertiser.
18. If during the repair it was necessary to replace elements related to safety of use or third parties (e.g. cutting blades, chains, guides, cutting element covers and other safety-related elements), the service is obliged to replace these elements even if it involves this with the need to charge fees with the consent of the user / advertiser. In case of refusal, the service will return the product without any repairs.
19. The warranty does not cover any damage caused to objects or persons.
20. The warranty for the goods sold does not exclude, limit or suspend the rights of the buyer who is a natural person under the warranty for defects of the thing sold.

Warranty card

.....
Equipment name *

.....
Model *

.....
Date of sale *

.....
Device serial number *

.....
Engine serial number

I declare that I have read the User Manual and the Warranty Card. I received the purchased equipment in working order, complete, along with the proof of purchase.

Legible signature of the buyer

.....
Stamp and legible signature of the seller *¹

* To be completed by the seller

***¹ I declare that I am official NAX Authorized Distributor.**

Submission of a statement inconsistent with the facts by an entity that is not an authorized NAX Distributor may result in criminal liability of the seller pursuant to art. 271 and Article 267 of the Penal Code.

No.	Dates	Repair report number	Official Stamp
	Equipment notification date		
	Date of completion of repair / Date of device release		
	Equipment notification date		
	Date of completion of repair / Date of device release		
	Equipment notification date		
	Date of completion of repair / Date of device release		
	Equipment notification date		
	Date of completion of repair / Date of device release		
	Equipment notification date		
	Date of completion of repair / Date of device release		

The original repair report is equivalent to the entry on the warranty card.

