

M A N U A L



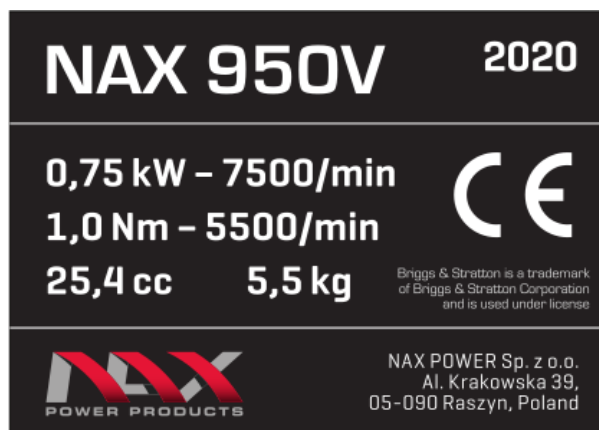
NAX 950V



over **100** years
of **EXPERIENCE**



A



B



C

D



PETROL GARDEN VACUUM CLEANER / BLOWER

Model: NAX 950V

CONSTRUCTION OF GARDEN VACUUM CLEANER AND VIEW DRAWINGS



Fig. 1



Fig. 2



Fig. 3



Fig. 4



Fig. 5



Fig. 6



Fig. 7



Fig. 8

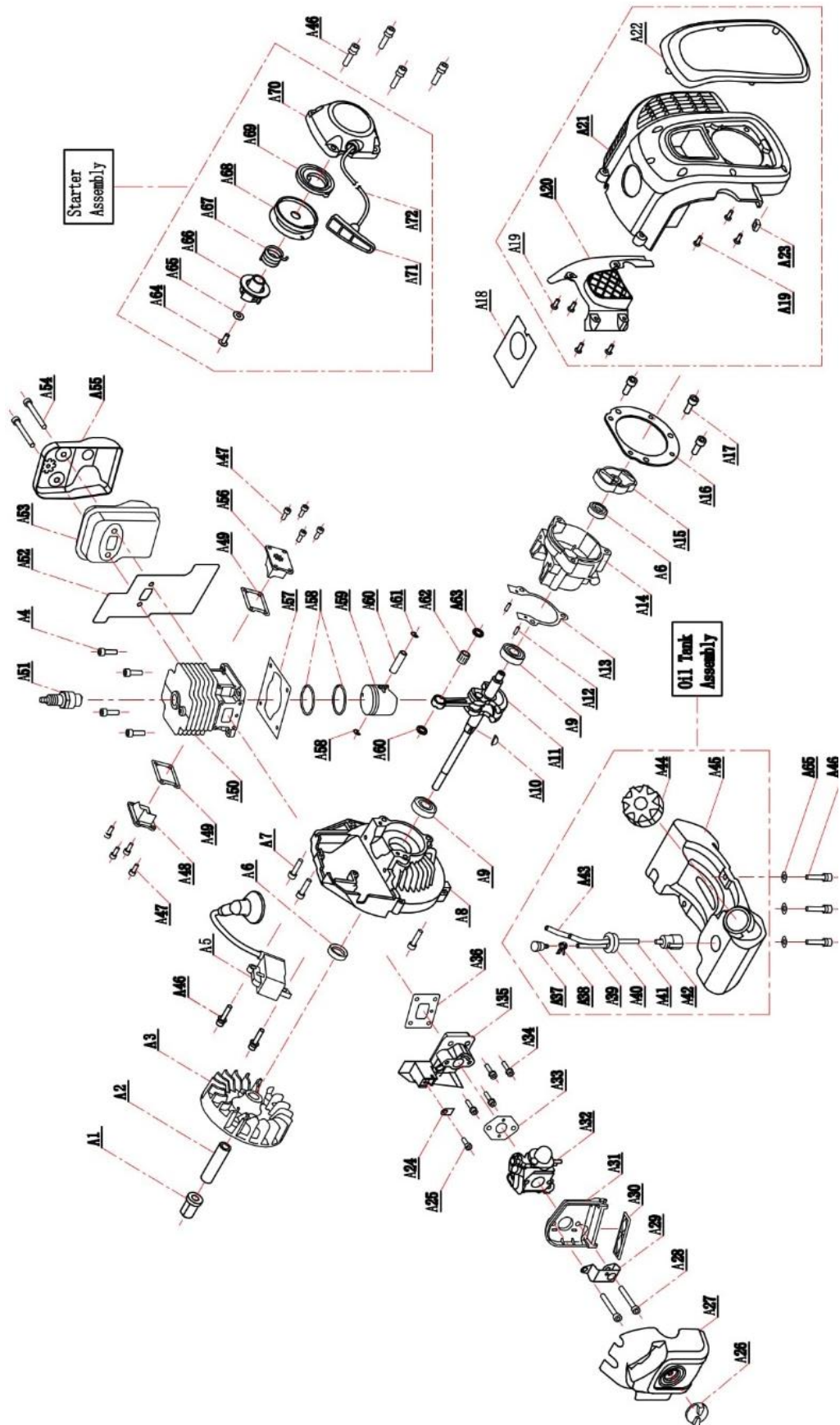


Fig. 10

**WARNING!**

Before assembly or operating, read the Operator's Manual.

The device is intended for household areas.

Using the device for professional, semi-professional or commercial purposes voids the warranty.

Original operation manual, edition 1/2020

Translation of the original operation manual from polish language

This manual should be treated as an integral part of the device. It should be stored in the place provided for it so that it is easily accessible. Remember to pass on the operation manual to a new owner or user if the device is resold or transferred to another person.

TABLE OF CONTENTS

Vacuum cleaner construction and overview drawings	4
Table of contents	8
Technical data	9
Description of graphic pages and pictograms	9
Safety rules for machines and devices with internal combustion engine	10
General safety regulations	10
Detailed safety regulations	12
Safety and producer's liability	14
Residual risk	14
Application	15
Before the first start up	15
Operation	15
Maintenance	17
Cleaning and storage	18
Transportation	19
Problems review and diagnosis	20
Device assembly diagrams	22
Warranty and service	22
Notes	22
Declaration of Conformity	24
Warranty conditions	26
Warranty card	27

THE DEVICE INCLUDES:

- leaf vacuum cleaner motor,
- two-part suction and blowing pipe,
- leaf bag with support strap,
- operation manual,
- EC declaration of conformity.
- guarantee conditions,
- warranty card.

TECHNICAL DATA

GARDEN VACUUM CLEANER / BLOWER	
Type, model	NAX 950V
Engine	TT-1E34F- G1 series BS
Fuel mix	40: 1 (4 l of gasoline for every 100 ml of two-stroke oil)
Fuel tank capacity	0.45 l
Engine capacity	230 cm ³
Mix oil (recommended)	Briggs & Stratton for two-stroke engines
Machine rated power	0,75 kW – 7500 rpm
Maximum motor torque	1 Nm - 5500 rpm
Maximum speed without load:	9000 rpm
Spark plug	TORCH L8RTF
Air speed	~ 265 km/h
Max amount of blown air	14.5 m ³ / min
Leaves bag capacity	40 L
Sound pressure (acoustic pressure) LpA	LpA=86.5 dB (A), K=3 dB (A)
The value of vibrations transmitted by the machine and acting on the operator's upper limbs	$a_{front_hv_eq}$ 2.194 m/s ² , K = 1.5 m/s ²
Guaranteed sound power level LWA	117 dB (A)
Equipment mass	5.5 kg
Year of manufacture	2020

DESCRIPTION OF GRAPHIC PAGES AND PICTOGRAMS

Pictograms page 2.A

1. Attention! Danger. Exercise special caution.
2. Important! Read the instructions and follow the warnings.
3. Wear safety glasses and ear protection.
4. Use protective gloves.
5. Keep equipment out of the reach of children.
6. Watch out for the objects thrown by the machine. Risk of personal injury.
7. Keep a safe distance from unauthorized persons.
8. Be careful hot surface.
9. Attention! Make sure that the top cover is secured or that the vacuum tube is correctly installed.
10. Place of the movable part of the fan cover.
11. Avoid contact of hands and objects with the rotor blade.
12. Do not pull on metal objects.

**Remember!**

- Risk of fire or explosion. Gasoline is highly flammable.
- Wear protective footwear.
- Check and clean the area before starting work.
- Note: Exhaust gases are harmful to health. There is a danger of poisoning or suffocation. Do not use the device indoors.
- Use extreme caution when working on slopes and sloping ground.
- Before cleaning, repairing / checking the machine, make sure that the blade and all moving parts have stopped.
- Keep out of the reach of children.



- It is prohibited to work in the rain.
- Do not dispose of used equipment. It is the user's responsibility to hand over used equipment to a designated collection point for waste recycling.

OTHER MARKINGS ON THE MACHINE

1. Name plate (page 2.B)
2. Guaranteed sound power level (page 2.C)
3. Other markings (page 2.D)

SAFETY RULES FOR MACHINES AND DEVICES WITH COMBUSTION ENGINE



WARNING!

- Read this manual thoroughly. Familiarize yourself with the safety regulations and with the control systems and the principles of proper use of the device.
- Failure to observe the following warnings and safety instructions may result in electric shock, fire and / or serious injury.
- Retain this operation manual for reference.
- This equipment is not intended for use by persons (including children) with reduced physical, sensory or mental capacity or without experience or knowledge of the equipment, unless supervised or in accordance with instructions for use given by persons responsible for their safety.
- Do not allow the device to be used by children, adolescents up to 16 years of age and people not acquainted with the device's operation manual.

GENERAL SAFETY REGULATIONS

WORKING AREA SAFETY

- Ensure good lighting and order in the workplace. Cluttered and dark areas contribute to accidents.
- Keep children and observers away from places where devices with an internal combustion engine are used. Distractions can cause loss of control of the device. Garden equipment should be left away from unauthorized persons.
- The operator or user is responsible for accidents or hazards occurring to other people or the environment.

SAFETY DURING WORKING WITH FUEL

- The internal combustion engine is designed to run on gasoline or a fuel mixture (see type of fuel in the device's technical data).
- Gasoline should be stored only in specially prepared containers (canisters).
- Store gasoline away from factors that could cause a fire, e.g. bonfires, open flames, where there is electric sparking, elevated temperature, welding sparks or other heat sources that can cause fuel to ignite.
- The fuel tank should only be filled outdoors.
- It is extremely dangerous to smoke cigarettes or use open flames when the machine is running or when filling the fuel tank.
- Always turn the engine off and cool before filling the tank with fuel.
- Do not fill the tank above the lower edge of the filler neck, gasoline has a high thermal expansion.
- If you spill fuel, immediately wipe up spilled gasoline with a dry cloth.
- When filling the fuel tank, be careful not to spill fuel on clothing. Gasoline-soaked clothing can catch fire and should be changed immediately.
- After filling the tank with fuel, tighten the cap tightly and before starting the engine, move the fuel canister to a place at least 3 m away from the place where the filling was carried out.



- Before starting the engine, check the tightness of the entire fuel system, especially the fuel tank, fuel lines, connectors, filler cap and carburetor area. Do not start the engine if you detect a leaking fuel system as it may cause a fire.
- The device should not be operated in explosive atmospheres, which form flammable liquids, gases or dust. The internal combustion engine may create sparks which may ignite the dust or fumes.
- Do not use the device if you have trouble turning it off. Any device that cannot be turned off is dangerous and must be repaired.
- Do not store the device with filled fuel tank indoors. Gasoline vapors are flammable and dangerous to health.

**CAUTION!**

Avoid breathing gasoline vapors and exhaust fumes. Gasoline, gasoline vapors and exhaust fumes can cause poisoning.

Do not operate the saw in closed or poorly ventilated rooms. In case of headache, nausea, hearing or vision impairment, stop work immediately.

PERSONAL SAFETY

- Be foresightful, watch what you do, and use common sense when working with the equipment. Do not use the equipment when you are tired or under the influence of drugs, alcohol or medication. A moment of inattention during work can cause serious personal injury.
- Protective equipment should be used. Always wear safety glasses. Wearing protective equipment such as a dust mask, non-slip shoes, helmet or hearing protectors under the right conditions will reduce personal injury.
- Before starting the equipment, remove all objects and keys. Leaving the key in the rotating working part of the machine can cause personal injury.
- Do not lean too far. You should always stand firm and balance. This will allow better control in unpredictable situations.
- Dress properly. Do not wear loose clothing or jewelry. Keep your hair, clothing and gloves away from moving parts. Loose clothes, jewelry or long hair can be caught in moving parts.
- When working, hold the tool by the additional handles if the tool is equipped with them. Losing control of the tool carries the risk of injury.
- Do not use the device if you have trouble turning it off. Any device that cannot be turned off is dangerous and must be repaired.



CAUTION! Despite the use of a safe structure by design, the use of protective measures and additional protective measures, there is always a residual risk of injury during work.

USE AND CARE FOR EQUIPMENT

- Do not overload the tool. Use a tool with the power appropriate for the work. Properly selected equipment will enable better and safer work under the load for which it was designed.
- Store the unused equipment out of the reach of children. Do not allow people not familiar with the tool or this manual to use the equipment. Internal combustion tools and equipment are dangerous in the hands of untrained users.
- Internal combustion tools must be maintained. Check alignment or jamming of moving parts, cracked parts and all other factors that may affect the operation of the device. If damage is found, the equipment must be repaired before use. Many accidents are caused by improper repair and / or maintenance of the equipment.
- Before using the device, replace all defective, worn and damaged parts. Replace with new warning signs on the device if they become illegible or damaged.
- Warning decals and spare parts can be ordered from NAX service and authorized dealers.
- An internal combustion tool, equipment, working tools etc. should be used in accordance with these instructions, taking into account the conditions and the type of work to be performed. Using the device in a manner not intended for it may be dangerous.

OPERATION AND EXPLOITATION OF TOOLS EQUIPPED WITH A BATTERY

- Before inserting batteries into the tool, make sure that its on / off switch is in the "off" position. Inserting the batteries into the device when the on / off switch is in the "on" position can cause serious injury.
- Use only the charger recommended by the manufacturer. Using a charger to charge other types of batteries may cause a fire.
- Never use batteries other than those recommended by the manufacturer. Use of other batteries may result in serious injury or fire.
- When the device is not in use, remove the battery. The battery should be kept away from metal objects such as paper clips, coins, nails, screws, etc., which may short-circuit the battery terminals. Shorting the battery terminals together may cause burns or a fire.
- Under extreme conditions, liquid may escape from the battery. You must avoid contact with it. If it accidentally it comes into contact with liquid - rinse immediately with water. If liquid gets in your eyes, contact your doctor immediately. Liquids leaking from the battery may cause irritation or burns.
- It is forbidden to use chargers and power supplies outside the rooms and in rooms with high humidity such as bathrooms or basements.



CAUTION! Chargers and power supplies for battery devices are intended for indoor use in a dry environment. Danger of electric shock and / or damage to the device.

REPAIR

- Before carrying out any adjustment, part replacement or storage, the spark plug wire must be removed. Such preventive safety measures reduce the risk of accidental starting.
- Repair should be performed by a qualified person using only original spare parts. This will ensure further safe operation of the device. It is recommended to have any service performed by an authorized NAX service center.

CAUTION! Danger of suffocation when children play with the packaging. The packaging, especially the foil bag, should be stored out of the reach of children.

DETAILED SAFETY REGULATIONS FOR COMBUSTION VACUUM CLEANERS

- Observe all safety instructions, operation manual, descriptions and data supplied with the device. Failure to follow the instructions below may pose a risk of serious injury.
- Use a soft, dry cloth to clean the vacuum cleaner. Never use any detergent or alcohol.
- Use personal protective equipment: safety glasses or goggles, protective gloves, protective footwear and protective clothing. Wear ear protectors. Exposure to noise over a long period of time may result in hearing loss.
- Regularly clean the equipment's ventilation slots. The engine blower draws dust into the housing, and large accumulation of metal dust can cause electrical hazards.
- You can only use the vacuum cleaner in good technical condition, perform the necessary actions if necessary or contact the service center. It is recommended to use the services of an authorized NAX service.
- Before starting, check if:
 - the device is assembled according to the operation manual,
 - the cutting tool is in good technical condition; regularly check chain attachment, damage and wear;
 - safety devices (e.g. cutting unit cover, housing, handle, engine switch) are in good technical condition and work properly;
- Before adjustment, cleaning, maintenance, switch off the engine.
- Do not use the device when other people, especially children or pets, are nearby.
- Do not start a damaged vacuum cleaner.
- Do not move the device with the engine running.
- Turn off the vacuum cleaner when:
 - you leave the equipment unattended,
 - before adjustment,
 - before checking, cleaning or repairing the device,

- after hitting with a foreign object,
- before you clean,
- in the event of abnormal vibrations.

PREPARATION

- When using the device, always wear solid footwear and long pants, do not operate the device without shoes or wearing sandals.
- Check carefully the area where you will be working and remove all stones, branches, wires and other foreign objects protruding from the ground that you might trip over during your work.
- Before starting work with the device, mark all obstacles hidden in the grass that cannot be removed.
- Check the surface to be cleaned, remove all papers, bags, stones, cans and other items.
- Before use and after falling or other impacts, inspect the scythe to identify any significant damage that may affect safety.



REMEMBER!

Do not leave the vacuum cleaner unattended. Never leave the vacuum cleaner turned on, as unintentional use may result, which may result in accidents.

USAGE

- Work only in daylight or in good artificial light.
- Do not work during rain, especially during a storm and in high humidity.
- Do not work on wet surfaces.
- Do not work in strong winds or other weather conditions that will cause the device to use a dangerous situation.
- Avoid sucking wet objects (leaves, dirt), as this may block the cutting chamber and reduce the functionality of the equipment. In this case, the device must be dismantled and cleaned. This should be done by a specialist electrician and is not covered by the warranty repair.
- Do not draw hard objects into the vacuum cleaner or any hot, smoldering or burning materials (e.g. cigarettes, embers, etc.), smoky, flammable, poisonous or explosive materials.
- Do not let damp or wet materials or any liquids to get inside the device.
- Use the device only after it has been fully assembled.
- Work in choke mode only after placing the bag for leaves.
- It is important to have correct posture during work. In order not to bother excessively, frequent change of work position is recommended.
- Stop work every 15 minutes - rest is necessary. Tiredness and distraction can contribute to an accident.
- Keep your feet steady and keep balance during work.
- When working on a slope, make sure your legs are standing firmly.
- Keep your toes and feet away from the suction pipe.
- Keep a safe, stable position during work, especially when working on slopes.
- Hold the device with two hands and work only with a properly secured shoulder strap supporting the device.
- Do not work too long because of the possibility of tingling or numbness in the fingers and hands. If such symptoms occur, stop working.
- Attention! The device causes vibrations of the limbs during operation. The value of vibration acceleration is provided in the table with rated data. Prolonged exposure of hands to vibration for several months or years, can cause the white toe disease, i.e. a decrease in limb temperature caused by ischemia. Symptoms such as tingling, numbness, hypersensitivity to cold should not be underestimated, see a doctor.
- Keep a safe distance of min. 5 m from other people. Stop work if other people are approaching.
- Do not point the device at yourself or at other people who might be around by accident.
- Ensure that unauthorized persons are within a safe distance from the power tool's range. Everyone who is near a working device must wear personal protective equipment.
- Do not use the device with damaged covers or housings or without any protection.
- Start the vacuum cleaner motor according to the instructions.
- Refuel after switching off the engine and after it has cooled down, as there is a risk of spillage and ignition from hot parts of the vacuum cleaner.
- Do not touch the vacuum cleaner with exposed body parts to avoid any possible burns.

MAINTENANCE AND STORAGE



WARNING!

- Before attempting any repair or maintenance, make sure the vacuum cleaner engine has stopped and is cold. Disconnect the high voltage cable from the spark plug to prevent accidental starting of the engine.
- Remember that there may be fuel in the machine's tank. Safety rules for handling fuel are described in this manual in the section "Safety in handling fuel".
- Keep all nuts, bolts and screws in good condition to make sure that the device will work safely.
- After finishing work clean the device.



CAUTION!

Always make sure that the device is turned off before performing any inspection or maintenance. Use a fine brush, tuft, or cloth to clean the housing of the dust, you can clean the vacuum cleaner with compressed air.

Cleaning with a damp cloth is allowed, however, provided that the device is dried immediately after this operation. Metal parts must be protected with oil. Regularly clean the ventilation holes with compressed dry air. Do not insert sharp objects into the ventilation openings.

After finishing work, please:

- Wipe the ventilation holes and leave them free of dirt.
- Wipe the vacuum cleaner with a dry cloth.



CAUTION! Never use aggressive or corrosive cleaning detergents as they may damage the plastic parts of the device. It is unacceptable to clean the vacuum cleaner with a water jet, water may damage the electrical parts of the vacuum cleaner.

Cleaning agents and solvents such as gasoline, carbon tetrachloride, chlorinated cleaning solvents, ammonia and household detergents that contain ammonia can damage plastic components.

The vacuum cleaner must be stored in a well-ventilated room in a dry, dust-free place. Only a functional device should be stored; rectify faults before storage.

IN CASE OF AN ACCIDENT OR FAILURE

In the event of an accident, stop / turn off the machine immediately and call for help (if required).

In the event of a fault, stop / turn off the machine and contact an authorized service center to rectify the fault.

SAFETY AND PRODUCER'S LIABILITY

Any use of the vacuum cleaner other than described in this manual is considered improper and the manufacturer is not liable for any damage or damages resulting from such a procedure. Proper use also includes respecting the operating, maintenance, storage and repair conditions established by the manufacturer. To prevent accidents, all safety precautions and hazard avoidance must be followed.

Any changes in the construction of the device made by the user may affect the safety of use of the machine and release the manufacturer from liability for damage or injuries.

RESIDUAL RISK

Despite the fact that the machine manufacturer bears responsibility for its construction eliminating danger, certain elements of risk during operation are unavoidable. The residual risk arises from the erroneous behavior of the machine's operator. The greatest danger occurs when performing the following prohibited activities:

- use of the machine for other purposes than described in the Operation Manual,
- when other people, especially children or animals are nearby,
- use of the device by people not acquainted with the operation's manual,
- using the device without proper, protecting operating clothing and footwear protecting foot,
- using the device with damaged guards or the casing and without properly installed safety devices, e.g. shield guards etc.



When observing the instructions in the operating manual, the residual hazards of using the machine may be eliminated. There is a risk in case of failure to comply with the above recommendations.

USAGE

Correct, reliable and safe operation using a garden vacuum cleaner depends mainly on proper operation.

Non-compliance with the instructions in this manual excludes the manufacturer and the service from any liability resulting from this.

The garden vacuum cleaner is widely used in works related to cleaning up green areas around the house and home garden. The vacuum cleaner is suitable for cleaning and removing leaves, cut grass, fallen conifer needles from terraces, roads and paths. The NAX garden vacuum cleaner has a grinding function. The device should not be used for purposes other than those for which it is intended, e.g. for sucking stones, branches, polystyrene. The device cannot be used on surfaces where there is health threatening dust / dust or as a tool for sucking water.

BEFORE THE FIRST START UP

The vacuum cleaner is supplied by the manufacturer in a cardboard packaging in a partially disassembled state. After reading the operating manual and assembly drawings, it should not be too difficult to assemble the vacuum cleaner. All necessary components for assembly are included in the packaging. This operation manual applies to various models of vacuum cleaners. This vacuum cleaner may differ from your purchase. Read the passages that refer to the device model you have.

OPERATION

CONSTRUCTION OF THE GARDEN VACUUM CLEANER / BLOWER

Illustrative drawings can be found on page 4, Fig. 1

1. Throttle trigger
2. Power On/Off switch;
3. Fuel pump
4. Choke control
5. Fuel-filler cap
6. Starter rope handle
7. Spark plug pipe
8. Muffler
9. Air filter cover
10. Upper handle
11. Lower handle
12. A nozzle focusing the air stream
13. Blower bottom tube
14. Blower upper tube
15. Lower suction pipe
16. Upper suction pipe
17. Retaining Screws
18. Bag connector with pipe
19. Leaf collection bag
20. Motor housing
21. Outlet port hole
22. Retaining Screws
23. Bent outlet pipe

APPLIANCE ASSEMBLY

VACUUM ASSEMBLY INSTALLATION

- Before starting work, connect the main part of the vacuum cleaner containing the motor with the suction pipe and the bag for collecting leaves.
- Insert the discharge pipe elbow **23 (Fig. 1)** deep into the collecting bag with the latch **19 (Fig. 1)**.
- Connect the discharge pipe elbow with the tip securing the bag **18 (Fig. 1)**.
- Fit the curved discharge pipe **23 (Fig. 1)** on the housing of the vacuum cleaner **20 (Fig. 1)** in such a way that the grooves of the pipe hit the outlets of the vacuum cleaner housing. Tighten the screw to lock the pipe.
- Connect both parts of suction pipe **15** and **16 (Fig. 1)** sliding one into the other and tighten with screws **17 (Fig. 1)**.
- Open the fan casing **24 (Fig. 5)** and push in the suction pipe composed of elements **15** and **16 (Fig.1)** (collect) so that the protrusions of the pipe hit the notches of the blower housing.
- Turn the suction tube so that it clicks into the housing.



CAUTION! In suction mode, the device may only be used after placing the bag.

BLOWER ASSEMBLY

Before starting work, connect the main part of the vacuum cleaner containing the motor with the blowing tube.

- Make sure that the fan casing is closed **24 (Fig. 5)**.
- Insert the nozzle focusing stream **12 (Fig. 1)** to the bottom pipe **13 (Fig. 1)** by turning until locked.
- Insert the bottom pipe **13 (Fig. 1)** to the upper tube **14 (Fig. 1)** and fasten with the fixing screws.
- Slide the assembled blowing tube into the motor housing **20 (Fig. 1)**, tighten the screw. Make sure the pipe is securely attached to the motor housing.

FILLING THE FUEL TANK

Fill the fuel tank before the first start-up.

When filling with fuel, observe the following rules:

- the engine cannot operate,
- the engine cannot be hot,
- do not allow fuel to spill.

Mix the filtered 95 octane unleaded gasoline with good quality engine oil - synthetic or semi-synthetic, designed for air-cooled 2-stroke engines well, and fill the fuel tank.

To refuel the vacuum cleaner tank:

- unscrew the fuel filler cap **5 (Fig. 1)**,
- pour previously prepared fuel mixture (max 450 ml),
- unscrew the fuel filler cap **5 (Fig. 1)**.



CAUTION! Most engine problems are caused by the wrong or old mix, the use of stale fuel or the wrong oil. Gasoline stored for more than 30 days should not be used to make the mixture - after this period it may lose its properties and may delaminate and precipitate. This can cause deterioration of engine operation, contamination of the power supply system, clogged fuel filter or seized engine. The use of Mixol oil and its derivatives as well as oil for 4-stroke engines is prohibited. The prepared mix should not be stored for more than 30 days, after this period it may lose quality and lubricity. With a planned break in the use of the device for more than a few days, remove the fuel from the fuel tank and the supply system by burning the mixture to the end.

Recommended mix ratio: 40: 1

Table for a 40: 1 mix

The amount of gasoline in liters	1	2	3	4	5
The amount of oil in ml	25	50	75	100	125



CAUTION! Gasoline vapors are flammable.


It is forbidden to use other proportions of the mixture under the threat of loss of warranty.

START UP



CAUTION! For safety reasons, the device cannot work without pipes installed.

To activate the device:

- Make sure that the vacuum cleaner stands firmly on the ground.
- Always hold the device.
- Switch **2 (Fig. 6)** set to "I" position.
- Several times (4-8 times) press the manual fuel pump **3 (Fig. 4)** to bring fuel to the carburetor (it should be pumped until fuel appears in the pump).
- With one hand, holding the vacuum cleaner so that it is stationary, pull the starter cord handle **6 (Fig. 4)** once without jerking checking that the engine is warm and starting.
- If the engine did not start, move the choke lever **4 (Fig. 4)** into the choke position . Then pull the starter rope until the first cycle of work.
- Press the gas trigger **1 (Fig. 4)** to switch off the choke (suction is automatic).
- Then pull the starter rope to start the device.

CAUTION! The device has a gas button **25 lock (Fig. 6)**.

An improperly mounted suction pipe of the vacuum cleaner or a badly closed rotor side cover may cause the inability to start the garden vacuum cleaner.

If the engine does not start, despite several attempts, it may mean that the spark plug is flooded. You should then unscrew the spark plug, wipe and dry it, and then pull the starter cord several times without jerking (without the spark plug and with the cylinder upside down), thus drying the cylinder with the crankcase from excess fuel. Repeat the entire startup procedure.

After starting, allow the engine to run for 2-3 minutes at idle until it warms up.

To turn off the device, slide the On / Off switch **2 (Fig. 6)** to the "O" position. Let the engine idle for 1-2 minutes before stopping the engine.

The maximum operating time of the vacuum cleaner / blower may not be longer than the working time on one fuel tank. The break should be twice as long as the work time. Do not leave the device running at idle for more than 5 minutes - risk of engine seizing and loss of warranty coverage.

EMPTYING THE LEAF BAG

As the bag fills up, suction power decreases significantly. The bag must be emptied when it is filled. Turn the device off before emptying the bag. Then slide the zipper fully apart and empty its contents.

MAINTENANCE

The rules for safe maintenance of the device are described in this manual in the section "Maintenance and storage" in the chapter "Detailed safety rules for petrol vacuum cleaners".



WARNING!

Before cleaning, inspecting or repairing the device, make sure that the engine is switched off and is not hot. Disconnect the spark plug to prevent the petrol saw from being switched on accidentally.

AIR FILTER CLEANING

A dirty air filter increases fuel consumption and reduces the efficiency of an internal combustion engine. The air filter should be cleaned as needed, at least every 10 hours of vacuum cleaner operation or earlier if it is dirty.

To remove the filter cover **9 (Fig. 1)** unscrew the screw securing the filter cover.

1. Open cover **9 (Fig. 1)**.
2. Remove the air filter element **(Fig. 7)**.
3. The main filter has, i.e. a pre-filter.
4. If the main filter is not damaged:

- wash the filter sponge element **9B (Fig. 7)** water with detergent,
 - squeeze the foam element into a clean cloth,
 - wet the filter sponge with a few drops of clean engine oil, then squeeze out excess oil.
5. If the **9A** pre-filter (**Fig. 7**) is dirty, clean it with a soft brush.
 6. If the filter is damaged or damaged, replace the filter with a new one.
 7. Install all air filter elements and make sure they are correctly positioned.
 8. Replace the cover in the air filter housing.

CYLINDER RIBBING

Dust accumulating on the cylinder fins may cause the vacuum cleaner engine to overheat, therefore the cylinder fins should be inspected and cleaned periodically during air filter maintenance.

MAINTENANCE OF THE SPARK PLUG

The spark plug should be replaced preventively before the season / once a year. To ensure proper operation of the engine, check the condition of the spark plug, check its cleanliness and the distance between the electrodes, which should be 0.5-0.7 mm. Use original Torch L8RTF spark plugs. Always do the following with the engine off:

1. Carefully pull the high voltage cable from the spark plug. Do not pull the cord, just the tip / pipe.
2. Unscrew the spark plug using the spark plug wrench provided.
3. Visually inspect the spark plug for damage and dirt. Use a copper wire brush to remove carbon and soot deposits.
4. Check the gap with a feeler gauge and adjust the electrode distance to 0.5-0.7 mm (**Fig. 8**).
5. Check the spark plug washer, screw the spark plug with a spark plug wrench. Torque 12-15 Nm.
6. Install the power cord on the spark plug.
7. In case of any problems please contact the NAX Service Center.

OTHER TIPS

Check for fuel leaks, loose connections, and damage to major parts of the unit, especially the handpiece and pipe fittings of the vacuum cleaner and blower. If any defects are found, make sure they are repaired before restarting.

CLEANING AND STORAGE

CLEANING

After finishing work, clean the device of grass, dust and dirt



CAUTION! Always make sure that the device is turned off and unplugged before carrying out inspection or maintenance.

Use a fine brush, tuft, or cloth to clean the housing of the dust, you can clean the vacuum cleaner with compressed air. Cleaning with a damp cloth is allowed, however, provided that the device is dried immediately after this operation. Metal parts must be protected with oil. Regularly clean the ventilation holes with compressed dry air. Do not insert sharp objects into the ventilation openings.

After finishing work, please:

- Wipe the ventilation holes and leave them free of dirt.
- Wipe the vacuum cleaner with a dry cloth.
- Do not leave the device's power cord bent.
- Remove the bag, transfer it to the inside, shake it off and dry thoroughly. This will prevent the formation of mold and unpleasant odors.
- Clean outlet parts from residues of cleaned materials.



CAUTION! Never use aggressive or corrosive cleaning detergents as they may damage the plastic parts of the device.



Cleaning agents and solvents such as gasoline, carbon tetrachloride, chlorinated cleaning solvents, ammonia and household detergents that contain ammonia can damage plastic components.

Lubrication is not required because the motor is equipped with bearings that are lubricated throughout its life.

LOCK REMOVAL

Leaves and fresh plant parts can clog the garden vacuum cleaner.

To clean the air inlet:

1. Take off the bag.
2. Clean the outside parts of the air outlet.
3. Use a bottle brush or other similar equipment to remove dirt residues from the inside of the air outlet and remove objects with a blunt tool without sharp edges.

To clean the suction pipe:

1. Carefully remove the suction pipe.
2. Tap inside of the vacuum cleaner pipe and clean it thoroughly.
3. Remove any dirt residue from the impeller with a brush and remove objects with blunt tools without sharp edges.
4. Check that the impeller can rotate freely and is not damaged. A damaged impeller should be replaced by an authorized service center.



ATTENTION: If the device suddenly stops during operation and stops sucking, it must be turned off immediately. If the device does not turn on after cleaning the suction pipe, contact a service center.

BAG REPLACEMENT

A damaged bag must be replaced immediately. Use only original bags. Otherwise the warranty is void.

STORAGE



Attention! The vacuum cleaner should be stored in a well-ventilated room in a dry, dust-free place out of reach of children. Only a functional device should be stored; rectify faults before storage.

Keep the tool out of the reach of children.

Do not store the device in direct sunlight, store it in a dark place or under low-light conditions.

Do not cover the device with nylon bags as it may get wet.

The equipment should be thoroughly cleaned at the end of the season and before winter storage. Clean the bag by removing it, emptying and washing with neutral soap under warm water. After drying, attach the bag again.

For better storage, the suction pipe can be unfolded.

If the vacuum cleaner is not in use, it should be stored clean, on a flat and dry surface. If the break in operation is longer than 3 months it is necessary to:

- empty and clean the fuel tank,
- dispose of fuel in accordance with applicable regulations,
- thoroughly clean the device, especially the cylinder fins and air filter.

TRANSPORTATION

Preparation for transport

- Turn off the vacuum cleaner before moving it.
- Keep the vacuum cleaner away from your body.
- For transport, the saw must be secured with transport belts, and if possible, transport the scythe folded in its original packaging.

PROBLEMS REVIEW AND DIAGNOSIS

INSPECTIONS

Inspections		Prior to each use	After each refueling	Monthly	In case of damage or malfunction	If required
Entire Machine	visually check (condition, leaks) and cracks	x	x			
	clean	x	x			x
Switch, starter, throttle	test	x	x			
Fuel filter in the fuel tank.	inspect			x		
	clean / replace filter				x	replace every 6 months
Fuel tank	check for leaks, cracks and signs of aging	x	x			
Air filter	inspect	x				
	replace					x
Cylinder ribs	clean			x		
Starter pull cord	inspect	x				
	replace				x	
Spark plug	adjust the gap between the electrodes					x
	replace				x	replace every 6 months
All available nuts and bolts (except carburetor bolts)	tighten					x
Anti-vibration system	check it out		x			

The above maintenance intervals only apply to normal machine operating conditions. If the daily working time is longer than normal or the cutting conditions are difficult, then the indicated actions should be performed much more often.

TROUBLESHOOTING

Problem	Possible cause	Solution
Difficulties in starting a cold engine.	Low fuel.	Check the fuel level and add fuel if necessary.
	Spark plug flooded or damaged.	Check, clean or replace the spark plug.
	No spark on the spark plug.	Replace the spark plug with a new one.
	No choke attached.	See chapter - Starting the vacuum cleaner.
	Contaminated air filter.	Clean or replace the filter.
	Incorrectly installed suction pipe.	Install the vacuum cleaner suction pipe correctly.
	Rotor flap open.	Close the rotor flap.
The equipment goes out and it is difficult to restart.	The fuel mix has run out.	Fill the fuel tank.
	Carburettor clogged.	Clean the carburettor.
	Ignition switch off.	Turn on the switch.
	Too much carbon deposits have accumulated on the spark plug.	Clean carbon deposit collected on the spark plug.
	Choke enabled.	Turn off choke.
Low engine acceleration speed.	Clogged cylinder cooler, too much soot has accumulated on the top of the cylinder.	Clean the cylinder.
	Oil circulation blocked and / or air filter blocked.	Clean.
	Dirty air filter.	Clean or replace the filter.
Idle speed is not stable.	The fuel pin is too tight and / or the stop screw is incorrectly adjusted.	Have it adjusted at the garden tools service. An authorized NAX service is recommended.
	The fuel pin is too tight and / or the oil is too thick.	Have the garden tools service adjusted. An authorized NAX service is recommended.
	Water or dirt in the fuel system.	Change the fuel, and if it does not help - have it repaired by qualified service.
Low choke power or no suction.	The bag is full.	Empty the bag.
	The bag is dirty.	Clean the bag.
	The device is clogged or blocked by foreign objects.	Remove the clogging materials (see chapter 'Cleaning and storage').
Low blowing power or no blowing.	The blowing pipe is blocked by foreign matter.	Remove the clogging materials (see chapter 'Cleaning and storage').
Hot housing.	The device is overheated.	Stop work and wait at least 10 minutes.

CAUTION! Take a break during operation - after every 15 minutes of work - 30 minutes break. Failure to comply with the above recommendation will result in the loss of warranty coverage.



DEVICE ASSEMBLY DIAGRAMS

The assembly diagram of the device is available on the website **6 and 7 (Fig. 9 and 10)**.

WARRANTY AND SERVICE

The product purchased by you is intended for amateur (hobby) use only. If the equipment is used for other purposes (commercial, professional), it will lose the guarantor's liability for the purchased equipment. You can find information on the warranty and the NAX service network in the attached warranty card.

Remember that the machine should be cleaned after each use. Keeping the equipment clean will ensure long-term and reliable operation. Cleaning, maintenance and periodic inspections are not repairs. Authorized NAC services may perform these activities as part of a paid service.

NOTES:

M A N U A L



DECLARATION OF CONFORMITY

Manufacturer:

name: **NAX POWER Sp. z o.o.**
address: Al. Krakowska 39, 05-090 Raszyn, Poland

with full responsibility declares that the machine:

name: **Chain saw**
model: **NAX 100C**
serial number: 047 **20** 2490749900 5000 **000001** - 047 **23** 2490749900 5000 **999999**

meets the essential requirements:

- ❖ of Machinery Directive **MD 2006/42 / EC**,
- ❖ Compatibility Directive **EMC 2014/30 / EU**,
- ❖ Noise Directive **NEE 2000/14 / EC Annex VI** and **2005/88 / EC**.

meets the requirements of the following harmonized standards:

- ✓ **EN ISO 11681-2A: 2011**,
- ✓ **EN ISO 14982: 2009**,

and meets the requirements:

- ✓ 2016/1628 / EU, 2018/989 / EU.

2000/14 / EC: the conformity assessment procedure followed according to Annex VI:

- ❖ measured maximum sound power level: L_{WA} is 107 dB (A),
- ❖ guaranteed sound power level: L_{WA} is 117 dB (A).

The conformity assessment procedures were carried out with the participation of a notified

name: TÜV SÜD Industrie Service GmbH
address: Westendstrasse 199, 80686 München, Germany
Identification number: 0036

Place of submission and storage of Technical Documentation:

NAX POWER Sp. z o. o
Al. Krakowska 39,
05-090 Raszyn



Jarosław Malinowski
Technical and Certification Director

Raszyn, December 20, 2019

WARRANTY

Dear Sir or Madam,

Thank you for purchasing our product and congratulations on your right choice. The device that you bought was designed and manufactured according to the latest technologies and represents global standards of quality and reliability, while being environmentally friendly.

We remind you to carefully read the commissioning and operation procedures before using the device; these procedures are contained in the Operating Instructions supplied with the device.

Our specialized service network serves you with all assistance in the field of technical and operational advice.

A list of authorized service points and service tips can be found at: naxpower.com

WARRANTY CONDITIONS

1. NAX guarantees smooth operation of the device in accordance with the technical and operational conditions described in the User Manual.
2. The device is granted a 36-month warranty to the consumer (i.e. a natural person making a legal transaction with the entrepreneur not directly related to its business or professional activity) and a 12-month warranty when purchased by the entrepreneur (i.e. a natural person, a legal person and an organizational unit operating in own business or professional activity). After this period, the user is entitled to paid repairs. The condition for granting a 36-month warranty is a warranty review at an authorized NAX service between 12 and 24 months of use. The review is free, but the costs of providing equipment for the service and consumables such as oil, candle, air filters, fuel filters, are covered by the user / owner of the equipment.
3. All damages disclosed during the warranty period resulting from material, assembly or manufacturing defects will be removed free of charge.
4. The basis for obtaining warranty protection is proof of purchase of the device from an Authorized Distributor of NAX equipment together with the print of this warranty card signed on the day of sale issued by the official **NAX Authorized Distributor**. Warranty coverage will not be granted if the warranty print is certified / stamped by a company that is not an NAX Authorized Distributor. This warranty applies within the territory of the Republic of Poland.
5. Defects of the device subject to warranty will be removed within 14 business days from the date of acceptance at the NAX Authorized Service. This period may be extended to 30 business days in exceptional cases.
6. For reasons beyond the control of the Guarantor, the aforementioned deadline may be extended, in particular if the product requires additional verification / expertise or there are circumstances in the form of force majeure preventing its behavior, e.g. flood, fire, strikes, natural disasters, import restrictions, etc.
7. The warranty does not include activities such as: assembly, maintenance, service, periodic adjustment and cleaning, as well as inspections, oil and filter changes together with materials and parts used for the above activities. These activities can be carried out for a fee.
8. In order to remove defects or damage, the device together with the proof of purchase and a valid warranty card should be delivered to: the nearest Authorized Service Center or use a convenient "door to door" system or to the place of purchase. The device should be cleaned beforehand. The service / shop may refuse to repair an uncleaned device. If the device is to be sent, the operating fluids (fuel and oil) must be emptied before handing it over to the courier or seller. The packaging must ensure safe transport, original packaging is recommended.
9. The method of repair is determined by the guarantor. The guarantor is not obliged to provide a replacement device during the warranty repair.
10. This warranty applies provided that the device is properly used, maintained and serviced in accordance with the attached operating instructions.
11. The user is obliged to immediately cease using the damaged device. Continued use of a damaged device may result in further faults and endanger the health or life of the user or third parties.
12. The warranty does not cover damage resulting from: mechanical damage, misuse, modification or repair carried out by unauthorized persons. This also applies to the installation and use of incorrect parts and filters, greases, oils, fuels.
13. Damage to the warranty seals, if any, or the serial number plate can be the basis for rejecting the warranty.
14. The warranty does not cover defects caused by lightning, fire, floods and other natural disasters.
15. The warranty does not cover consumables and components subject to natural wear during operation and subject to user control such as V-belts, bulbs, filters, spark plugs, road wheels, knives and cutting blades, knife holders, string heads, cutting chains, chain guides, steering cables, keys and overload pins.
16. NAX is not responsible for direct or indirect damages, losses or costs resulting from the use or inability to use the device for any purpose.
17. If it is necessary to carry out activities related to the maintenance of the device before starting the repair, the Service / Store may carry out such activities against payment with the consent of the user / advertiser.
18. If during the repair it was necessary to replace elements related to safety of use or third parties (e.g. cutting blades, chains, guides, cutting element covers and other safety-related elements), the service is obliged to replace these elements even if it involves this with the need to charge fees with the consent of the user / advertiser. In case of refusal, the service will return the product without any repairs.
19. The warranty does not cover any damage caused to objects or persons.
20. The warranty for the goods sold does not exclude, limit or suspend the rights of the buyer who is a natural person under the warranty for defects of the thing sold.



Warranty card

.....
Equipment name *

.....
Model *

.....
Date of sale *

.....
Device serial number *

.....
Engine serial number

I declare that I have read the User Manual and the Warranty Card. I received the purchased equipment in working order, complete, along with the proof of purchase.

Legible signature of the buyer

.....
Stamp and legible signature of the seller *1

* To be completed by the seller

***1 I declare that I am official NAX Authorized Distributor.**

Submission of a statement inconsistent with the facts by an entity that is not an authorized NAX Distributor may result in criminal liability of the seller pursuant to art. 271 and Article 267 of the Penal Code.

No.	Dates	Repair report number	Official Stamp
	Equipment notification date		
	Date of completion of repair / Date of device release		
	Equipment notification date		
	Date of completion of repair / Date of device release		
	Equipment notification date		
	Date of completion of repair / Date of device release		
	Equipment notification date		
	Date of completion of repair / Date of device release		
	Equipment notification date		
	Date of completion of repair / Date of device release		

The original repair report is equivalent to the entry on the warranty card.

